



# User guide

Outstanding efficacy against black scurf in potatoes.

EMESTO<sup>®</sup>  
PRIME

Emesto<sup>®</sup> Prime is an in-furrow fungicide that offers outstanding efficacy against black scurf (*Rhizoctonia solani*). Emesto Prime will help to maximise profits for potato growers as it delivers better quality potatoes.

As a Group 7 fungicide, Emesto Prime offers growers an alternate mode of action for the control of *Rhizoctonia* infections which cause black scurf, stem and stolon canker. This alternative mode of action can be rotated with existing fungicide groups to limit the development of resistant disease populations and decrease selection pressures on currently registered fungicides.



## Benefits of Emesto Prime

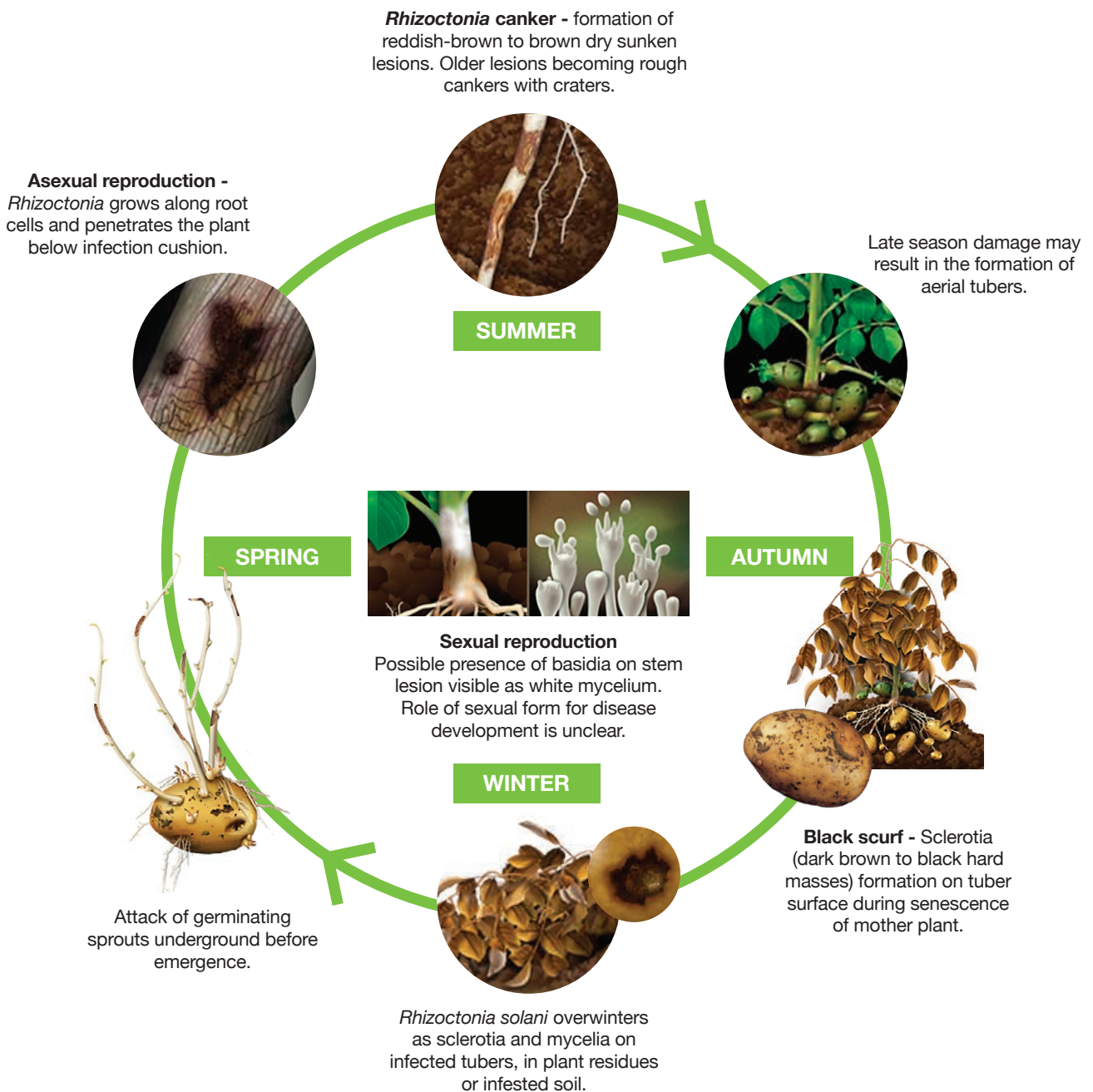
- **Alternate mode of action for *Rhizoctonia* control** – can be rotated with other fungicide groups to avoid build-up of resistant disease populations.
- **Outstanding efficacy** – Emesto Prime provides control of black scurf and *Rhizoctonia* canker.
- **Minimal translocation** – keeps the product in and around the roots where it is most effective against black scurf.



Root lesions caused by black scurf on potato roots.



# Disease cycle of *Rhizoctonia* in potatoes



## Black scurf

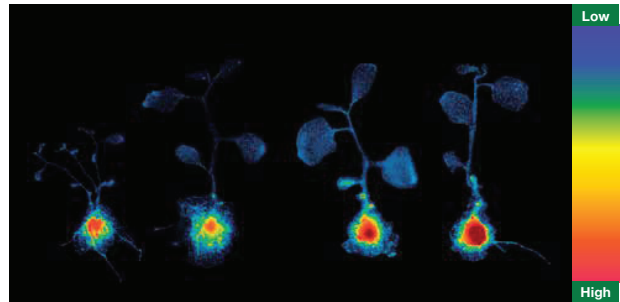
Cool and wet conditions after planting favour the development of black scurf. *Rhizoctonia* can survive on organic matter in the soil and attack sprouts before they emerge. Symptoms of black scurf include stem lesions, reduced plant mass, smaller cupped leaves, early flowering, aerial tubers and in severe cases prevention of emergence.



## How does Emesto® Prime work?

Emesto Prime has minimal translocation of penflufen from the roots to the foliage.

This means that the product remains in and around the treatment zone, providing protection to young shoots and stolons from black scurf.



Distribution after application on microtubers 15 days after sowing.

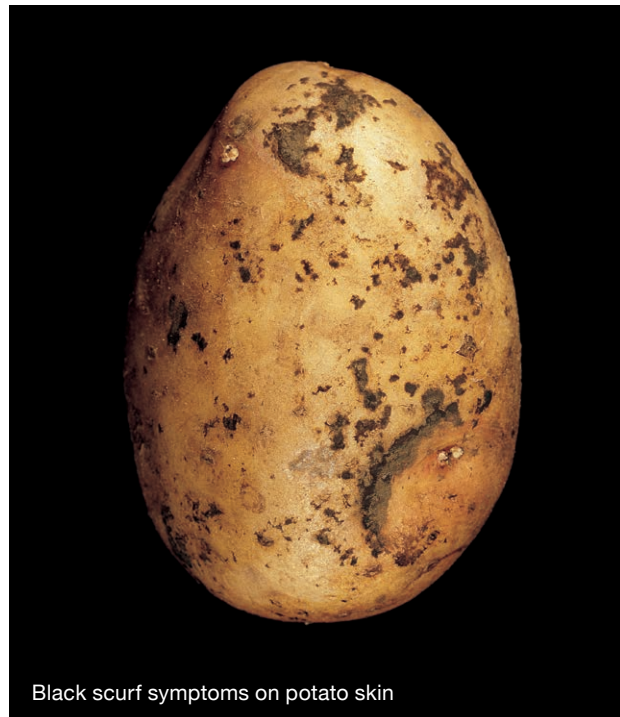
---

## Application

Emesto Prime is applied as an in-furrow application at planting at a rate of 5.5 mL/100 m row in 1 - 3 L of water/100 m row. Ensure the water volume applied does not wash off any previously applied seed treatments.

Mount the spray nozzle so the spray is directed into the furrow at the seed piece as a 15 - 20 cm band to apply product just before the seed piece is covered. Alternatively use a 2-nozzle system per row spraying the furrow prior to seed drop and after it has dropped just prior to covering.

To reduce the potential for seed piece breakdown, strictly follow label instructions regarding water volume and follow industry recommended seed piece handling and planting practices.



Black scurf symptoms on potato skin

## Mode of action

Succinate Dehydrogenase Inhibitor (SDHI) – succinate dehydrogenase is one of the enzymes that is active in the respiratory chain in the mitochondria of fungi. The respiratory chain is responsible for the production of chemical energy (ATP) in the fungal cell. Emesto Prime inhibits the succinate dehydrogenase enzyme, stopping energy production from occurring in the fungal cell.



## USAGE RECOMMENDATIONS

<b>DISEASE</b>	Black scurf and <i>Rhizoctonia</i> canker ( <i>Rhizoctonia solani</i> ).
<b>ACTIVE INGREDIENT</b>	Penflufen (Fungicide Group 7).
<b>PRODUCT RATE</b>	4.0 mL to 5.5 mL/100 m of row.
<b>WATER RATE</b>	Apply Emesto® Prime in 1 - 3 L of water/100 m of row. Ensure the water volume applied does not wash off any previously applied seed treatments.
<b>APPLICATION</b>	Emesto Prime can be applied with existing in-furrow spray application equipment. Direct into the furrow at the seed as a 15 - 20 cm band applied just before the seed is covered. Alternatively use a 2-nozzle system spraying the furrow prior to seed drop and after it has dropped just prior to covering.
<b>COMPATIBILITY</b>	Emesto Prime is compatible with Serenade® Prime, Confidor® and Amistar®.
<b>WITHOLDING PERIOD</b>	Not required when used as directed.
<b>PACK SIZE</b>	5 L.



## REGIONAL BUSINESS MANAGERS & MARKET DEVELOPMENT AGRONOMIST

Upper North Island	Phil Bertram	021 426 825
Gisborne and Hawke's Bay	Marc Fox Brand Marketing Manager	021 426 823
Lower North Island / Nelson / Marlborough	Susie Dalgety	021 426 824
North and Mid Canterbury	David Parker	021 760 794
Mid and South Canterbury	David Weith	021 426 096
Otago and Southland	Daniel Suddaby	021 426 822
New Zealand	Jonathon Shields Market Development Agronomist	021 540 298

*We're with you in the field*  
**[cropscience.bayer.co.nz](http://cropscience.bayer.co.nz)**

Emesto® is registered pursuant to the ACVM Act 1997, No. P9916 and approved pursuant to the HSNO Act 1996, No. HSR101587. Emesto®, Serenade® and Confidor® are registered trademarks of the Bayer Group. © Bayer Crop Science 2024.

**Disclaimers:** Before using the products read and carefully observe directions, cautionary statements and other information appearing on the product label. Our technical information, whether given verbally or in writing, is based on extensive testing. It is, to the best of our current knowledge, true and accurate, but given without warning in as much as the conditions of use and storage are beyond our control. Descriptions and property data of the product do not contain any statement as to the liability for possible damage. In other respects our conditions of sale apply.