



VIMOY
iblon



PROSARO

User guide

Boosting yield and profit through exceptional disease control in wheat, barley, triticale and ryegrass seed crops.

VIMOY® iblon® provides superior disease control in wheat, barley, triticale and ryegrass seed crops.

- Convenient and flexible fungicide which allows you to design your most effective disease management programme by combining with other fungicides such as Prosaro®
- Superior disease control means crops stay cleaner and greener for longer, delivering higher yields and increased profit
- Locally developed under NZ conditions for NZ farmers and supported by the Bayer field team



Increase your yield and profit



VIMOY iblon contains isoflucypram (ISY), a recently registered SDHI fungicide active ingredient that delivers outstanding disease control, exceptional plant health, consistently higher yields and greater profit.

Prosaro is a proven, broad spectrum, dual-DMI fungicide that complements the benefits of VIMOY iblon perfectly.

VIMOY iblon + Prosaro provides outstanding control of all key diseases, impressive yield benefits and excellent profitability, all delivered in a responsible fungicide stewardship package.



BENEFITS OF VIMOY iblon + PROSARO



HIGH YIELD AND PROFIT

Through exceptional disease control VIMOY iblon + Prosaro delivers higher yields and profit. Trialed in New Zealand on wheat, barley, triticale and ryegrass seed crops against other commonly used fungicide mixtures.



OUTSTANDING DISEASE CONTROL

VIMOY iblon + Prosaro provides exceptional control of all key, yield-reducing diseases of wheat, barley and ryegrass seed crops.



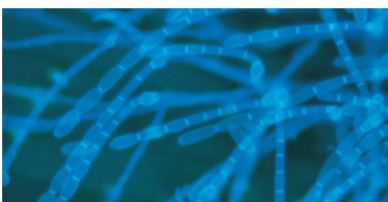
EXCEPTIONAL PLANT HEALTH

Trials carried out in New Zealand and Europe have shown that the outstanding disease control provided by VIMOY iblon + Prosaro delays senescence which leads to higher yields.



SUITED TO NZ CONDITIONS

Developed and supported in NZ by the Bayer field team, you can be sure you're using fungicides suited to NZ conditions and backed by a team passionate about helping you increase your profit.



FUNGICIDE STEWARDSHIP

By using VIMOY iblon + Prosaro you are protecting your crop with fungicides of different modes of action, and which are both active against the target diseases. This is a very strong approach to adopt to slow down the development of fungal resistance.

VIMOY iblon + Prosaro

Driving profit forward in wheat

Both VIMOY iblon and Prosaro are registered for use on wheat between GS30 and GS69 for the control of the key wheat diseases: speckled leaf blotch, stripe rust and leaf rust. Control of these diseases is illustrated below, along with the yield benefits.



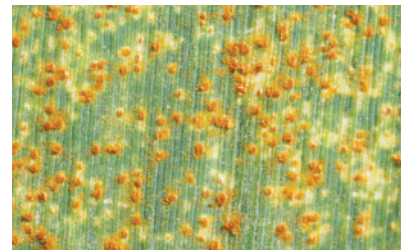
Speckled leaf blotch (SLB)

This is the most challenging disease attacking wheat in New Zealand. Massive yield losses can result and even when disease pressure is low a 1-2 t/ha loss can occur.



Stripe rust

On susceptible cultivars, stripe rust can cause very rapid and extensive leaf loss, leading to significant yield losses.



Leaf rust

Mainly a problem in early summer, as it is favoured by warmer, drier conditions. Again, if not controlled, leaf rust can devastate yield.



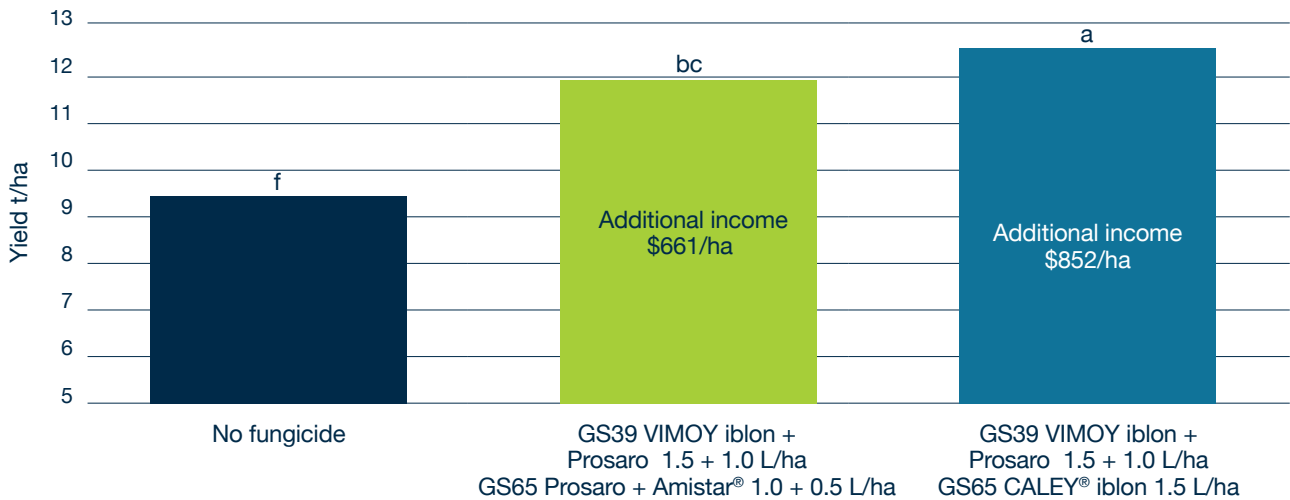
Location Aorangi, Manawatu. Wheat, c.v. Starfire. Image taken 15-12-20.



The plot also received a GS30 fungicide with the objective of “dampening down” disease, thereby giving the GS39 fungicide treatments a high pressure challenge.



VIMOY iblon + PROSARO FOR HIGHER YIELD AND INCREASED PROFIT

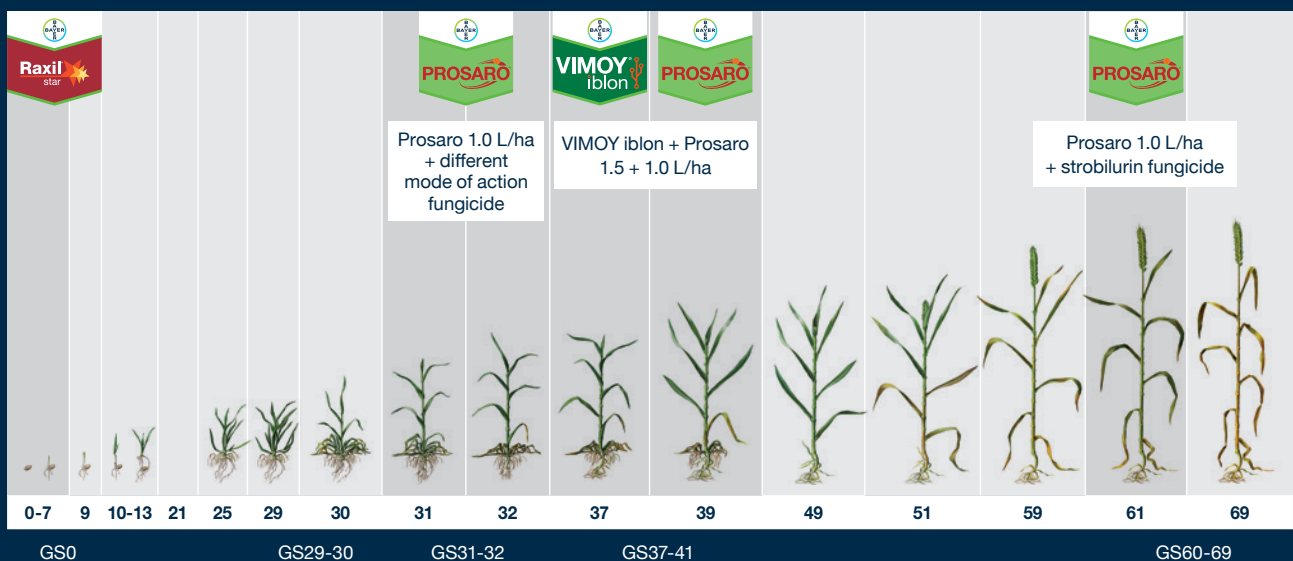


Mean of three wheat trials, NZ 2020/21. Manawatu FP21NZL062KS01; South Canterbury FP21NZL062JS06; Southland FP21NZL062SR03. Treatments apart from “no fungicide” received a GS30-32 fungicide application. Additional income calculation; wheat \$400/t, fungicide market on-farm price.

Three wheat trials were yielded by Bayer NZ in 2020/21. Two three application fungicide programmes are illustrated. Both treatments gave a significant and very profitable yield compared to the no fungicide treatment. While the fungicide programme using Prosaro + Amistar at GS65 gave additional income of \$661/ha, switching to CALEY iblon increased additional income to \$852/ha.

Wheat Spray Programme

Please refer to the table on page 7 for application instructions and the back page for the diseases controlled.



The top two leaves and the ear are key for yield production in wheat, and so it is vital to protect them from disease infection. This makes flag leaf fully emerged (GS39) the time to apply VIMOY iblon + Prosaro. For high potential crops, replace Prosaro + strobilurin with CALEY iblon at GS65.

VIMOY iblon + Prosaro

Driving profit forward in *barley*

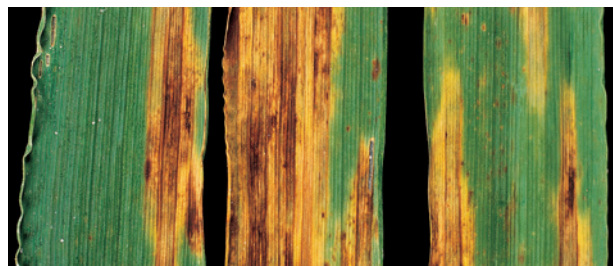
Barley is attacked each year by a number of aggressive diseases, which if not treated can lead to a very significant yield loss. VIMOY iblon + Prosaro is registered for use on barley between GS30 and GS61 for the control of all key diseases: scald, net blotch, leaf rust and ramularia leaf spot.

Control of these diseases is illustrated below, along with the resulting yield benefits.



Scald

This is one of the first diseases to attack barley, being regularly found in late winter and early spring, as it thrives in cool, moist conditions. In spring, with the right weather conditions, scald will progress rapidly, infecting new leaves as they emerge, to eventually infect all leaves and the stem. When not effectively controlled, significant yield losses occur.



Net blotch

In some years, it can be quite hard to find net blotch, as it requires a susceptible cultivar and usually a second-year barley crop to develop. Like scald, it is a disease favoured by cool, moist conditions, and is often seen in early spring. However, under the right conditions, it can develop very rapidly and lead to significant yield losses.



Leaf rust

In recent years, this disease has become easier to find, with infections becoming more severe and starting earlier in spring. All rust diseases complete their life cycle very quickly and have multiple life cycles per season, which is why they can have such a devastating impact.



Ramularia leaf spot (RLS)

RLS is now an important pathogen of barley throughout New Zealand and leads to rapid leaf loss in early summer.



Location Aorangi, Manawatu. Barley, c.v. Sanette.
Image taken 15-10-20.

Location Aorangi. Seed treatment Raxil Star.
The crop also received a GS31-32 fungicide application of Delaro® 0.75 L/ha + Phoenix® 1.5 L/ha.

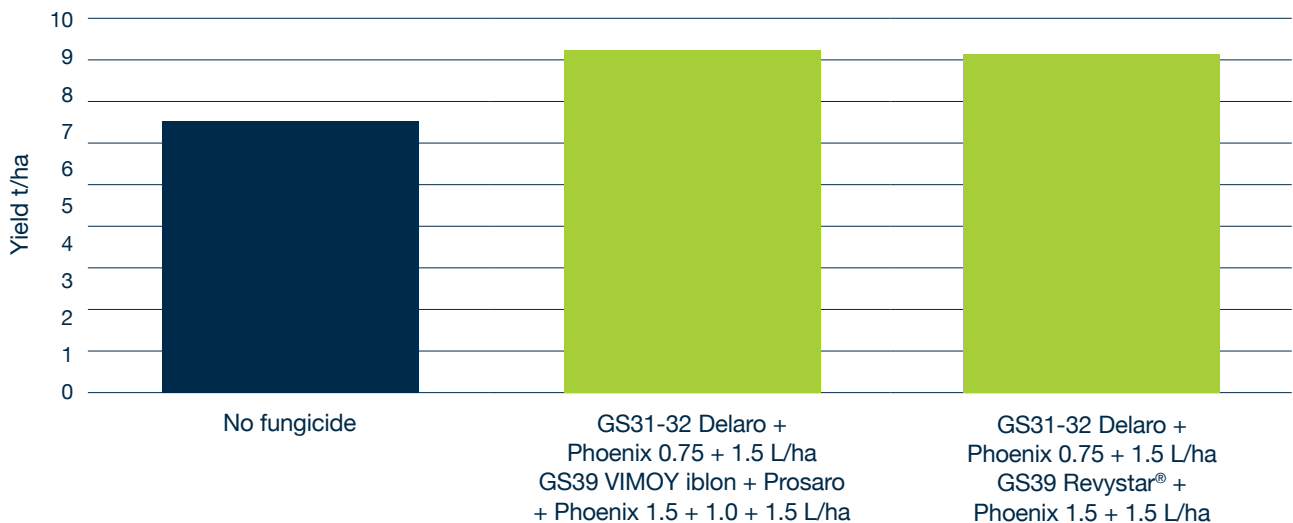


Location FAR site Chertsey mid-December 2018.

Location FAR site. Significant reduction in RLS following a Delaro/iblon fungicide programme.

RLS has the ability to rapidly develop resistance to fungicides and is now resistant to strobilurin fungicides within New Zealand. In Europe, and now in New Zealand, it seems RLS is becoming resistant to SDHI fungicides. While VIMOY iblon + Prosaro significantly reduces the level of RLS, it needs to be viewed as part of a disease management tool, not for RLS control. VIMOY iblon + Prosaro should be applied in combination with Phoenix.

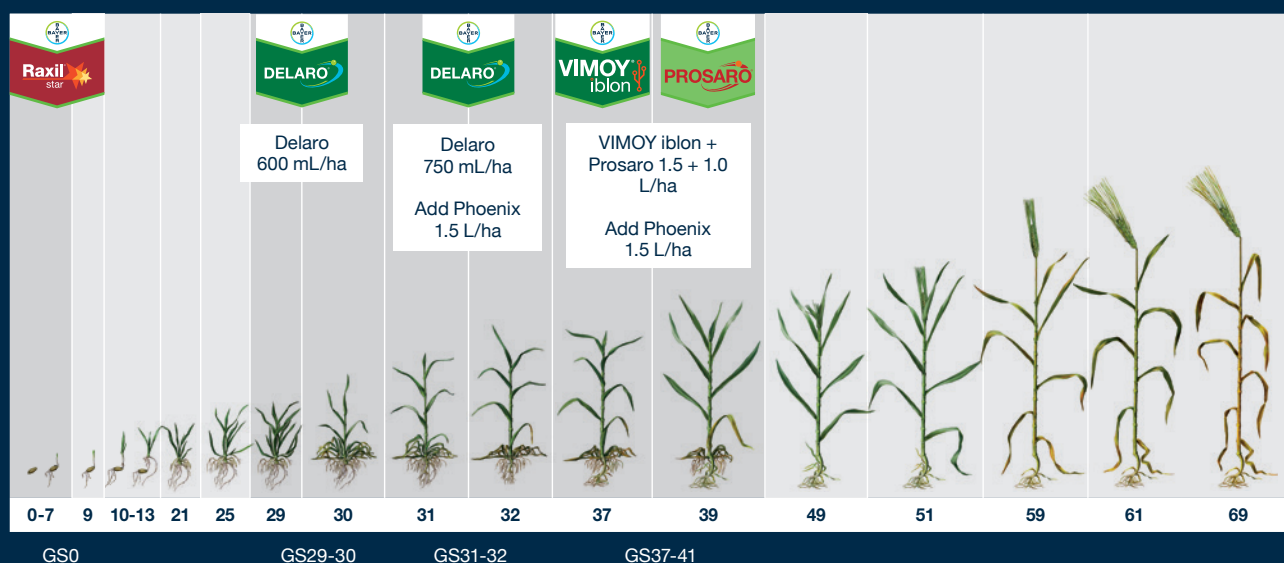
✓ VIMOY iblon + PROSARO DELIVERS EXCELLENT YIELD AND PROFIT



Mean of four barley trials, NZ 2020/21. Manawatu FP21NZL062KS02; Mid-Canterbury FP21NZL062JS04; South Canterbury FP21NZL062JS03; Southland FP21NZL062SR02. Treatments apart from "no fungicide" received a GS30-32 fungicide application.

Barley Spray Programme

Please refer to the table below for application instructions and the back page for the diseases controlled.



For barley crops, the most important period for yield production is early spring, with the lower leaves and stem delivering the most yield. Delaro provides excellent control of scald and net blotch, the main early spring diseases. In early summer, RLS and leaf rust are the main diseases and VIMOY iblon + ProSaro, with the addition of Phoenix, will provide excellent disease management. (Please note: the level of RLS reduction is dependent on the resistance status of RLS in your paddock).



VIMOY iblon + PROSARO KEY POINTS FOR USE

DISEASE AND CROP	The key foliar diseases of wheat, barley, triticale and ryegrass seed crops.								
RATE	VIMOY iblon 1.5 L/ha ProSaro 1.0 L/ha								
APPLICATION TIMING	Main use period GS39 wheat, barley, and triticale. First sign of disease for ryegrass seed crops. But anytime between GS30-GS69 wheat and triticale, GS30-61 barley, and no later than GS61 ryegrass seed crops.								
APPLICATION METHOD	By tractor mounted hydraulic boom sprayer or by aerial application.								
WATER RATE	100-300 L/ha water by ground application or 50 L/ha by aerial application - medium to coarse droplets.								
RAINFASTNESS	Rainfast one hour after application under most conditions.								
WITHHOLDING PERIOD	<table border="0"> <tr> <td>Cereals grain and straw/stubble:</td> <td>56 days</td> </tr> <tr> <td>Cereals green feed/silage:</td> <td>42 days</td> </tr> <tr> <td>Ryegrass seed crops regrowth:</td> <td>49 days</td> </tr> <tr> <td>Ryegrass seed crops straw/stubble:</td> <td>35 days</td> </tr> </table>	Cereals grain and straw/stubble:	56 days	Cereals green feed/silage:	42 days	Ryegrass seed crops regrowth:	49 days	Ryegrass seed crops straw/stubble:	35 days
Cereals grain and straw/stubble:	56 days								
Cereals green feed/silage:	42 days								
Ryegrass seed crops regrowth:	49 days								
Ryegrass seed crops straw/stubble:	35 days								
BUFFER ZONE	None required								
COMPATIBILITY	Compatible with a wide range of commonly used fungicides and insecticides.								
PACK SIZE	10 litre.								
APPROVED HANDLER	Approved handler status is not required.								



SUMMARY OF DISEASES CONTROLLED

WHEAT	BARLEY	TRITICALE	RYEGRASS SEED CROPS
Speckled leaf blotch Stripe rust Leaf rust	Scald Net blotch Ramularia leaf spot Leaf rust	Stripe rust Leaf rust	Stem rust

REGIONAL BUSINESS MANAGERS & MARKET DEVELOPMENT AGRONOMIST

Upper North Island	Phil Bertram Regional Business Manager	021 426 825
Gisborne and Hawke's Bay	Marc Fox Customer Market Manager	021 426 823
Lower North Island / Nelson / Marlborough	Susie Dalgety Regional Business Manager	021 426 824
North and Mid Canterbury	David Parker Regional Business Manager	021 760 794
Mid and South Canterbury	David Weith Regional Business Manager	021 426 096
Otago and Southland	Daniel Suddaby Regional Business Manager	021 426 822
New Zealand	Jonathon Shields Market Development Agronomist	021 540 298

We're with you in the field
cropscience.bayer.co.nz



VIMOY iblon, CALEY iblon, Delaro, Prosaro and Raxil Star are registered pursuant to the ACVM Act 1997 Nos. P9617, P9637, P8953, P7662 and P9246 and are approved pursuant to the HSNO Act 1996, Nos. HSR101374, HSR101413, HSR100886, HSR007871 and HSR101132 respectively. Vimoy®, Caley®, iblon®, Delaro®, Prosaro® and Raxil® are registered trademarks of the Bayer Group. © Bayer Crop Science 2021

Disclaimers: Before using the products read and carefully observe directions, cautionary statements and other information appearing on the product label. Our technical information, whether given verbally or in writing, is based on extensive testing. It is, to the best of our current knowledge, true and accurate, but given without warning in as much as the conditions of use and storage are beyond our control. Descriptions and property data of the product do not contain any statement as to the liability for possible damage. In other respects our conditions of sale apply.