



VIMOY<sup>®</sup>  
iblon



PROSARO<sup>®</sup>

# iGuide

*Outstanding disease control in **barley.***



*We're with you in the field*

*[cropscience.bayer.co.nz/VIMOYiblon](https://cropscience.bayer.co.nz/VIMOYiblon)*



# CONTENTS



**VIMOY**<sup>®</sup>  
iblon



**PROSARO**<sup>®</sup>

The benefits of using VIMOY <sup>®</sup> iblon <sup>®</sup> + Prosaro <sup>®</sup>	<b>3-4</b>
Product information - VIMOY iblon	<b>5</b>
Product information - Prosaro	<b>6</b>
Key points for use	<b>7</b>
Barley spray programme	<b>8</b>
Driving profit forward in barley	<b>9</b>
Key diseases in barley	<b>11-15</b>
The importance of fungicide stewardship	<b>16</b>
VIMOY iblon + Prosaro + Phoenix in action	<b>17</b>
VIMOY iblon + Delaro <sup>®</sup> in action	<b>18</b>
Contact us	<b>20</b>

# THE BENEFITS OF USING VIMOY iblon + PROSARO



## 1 Outstanding disease control

- All key diseases of wheat, ryegrass seed crops and barley

## 2 Excellent plant health

- Ensures long retention of healthy leaves

## 3 Consistently high yields

- Boosted by quality grain sample

# THE BENEFITS OF USING VIMOY iblon + PROSARO



## 4 Impressive profitability

- Excellent return on investment for the farmer

## 5 Agronomic skill

- Focus on on-farm skill, support and advice

## 6 Responsible fungicide stewardship

- Multiple modes of action
- Option to add Phoenix<sup>®</sup> for barley

# PRODUCT INFORMATION



VIMOY<sup>®</sup>  
iblon<sup>®</sup>



A versatile, standalone SDHI fungicide for outstanding yields and exceptional disease control.

PRODUCT RESOURCES >



# PRODUCT INFORMATION

**PROSARO**



Flexible, dual DMI fungicide to control the key diseases of wheat, barley and ryegrass seed crops.

**PRODUCT RESOURCES >**

# KEY POINTS FOR USE



**VIMOY**<sup>®</sup>  
iblon

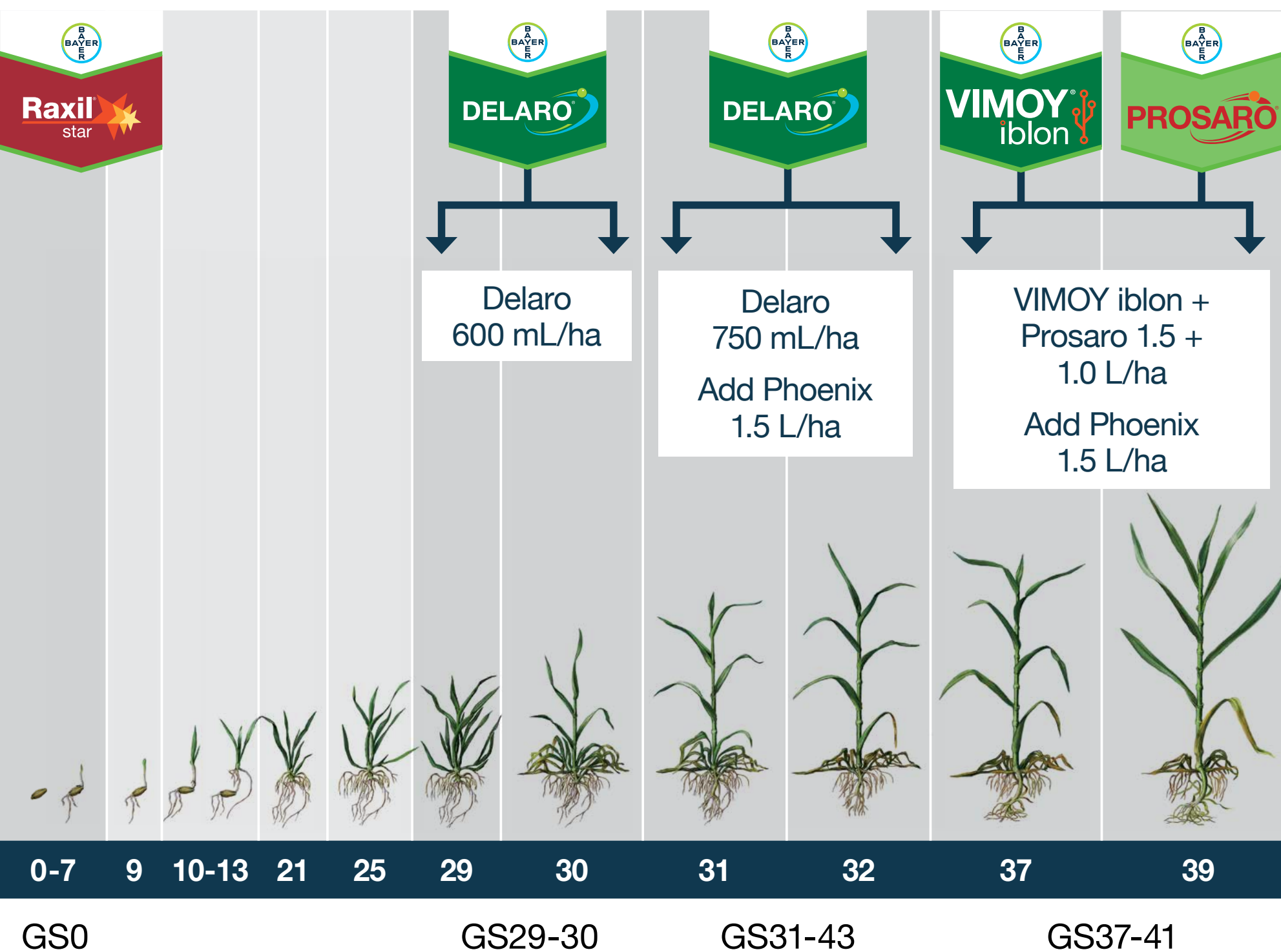


**PROSARO**<sup>®</sup>

<b>DISEASE AND CROP</b>	The key foliar diseases of wheat, barley and ryegrass seed crops.
<b>RATE</b>	VIMOY iblon 1.5 L/ha + Prosaro 1.0 L/ha.
<b>APPLICATION TIMING</b>	Main use period GS39. But anytime between GS30-GS69.
<b>APPLICATION METHOD</b>	By tractor mounted hydraulic boom sprayer or by aerial application.
<b>WATER RATE</b>	100-300 L/ha water by ground application or 50 L/ha by aerial application - medium to coarse droplets.
<b>RAINFASTNESS</b>	Rainfast one hour after application under most conditions.
<b>WITHHOLDING PERIOD</b>	Cereals grain and straw/stubble: 56 days. Cereals green feed/silage: 42 days.
<b>BUFFER ZONE</b>	None required.
<b>COMPATIBILITY</b>	Compatible with a wide range of commonly used fungicides and insecticides.
<b>PACK SIZE</b>	10 litre.
<b>APPROVED HANDLER</b>	Approved handler status is not required.

# BARLEY SPRAY PROGRAMME **GS0-41**

For barley crops, the most important period for yield production is early spring, with the lower leaves and stem delivering the most yield. Delaro<sup>®</sup> provides excellent control of scald and net blotch, the main early spring diseases. In early summer ramularia leaf spot (RLS) and leaf rust are the main diseases and VIMOY iblon + Prosaro, with the addition of Phoenix, will provide excellent disease management. (Please note: the level of RLS reduction is dependent on the resistance status of RLS in your paddock).



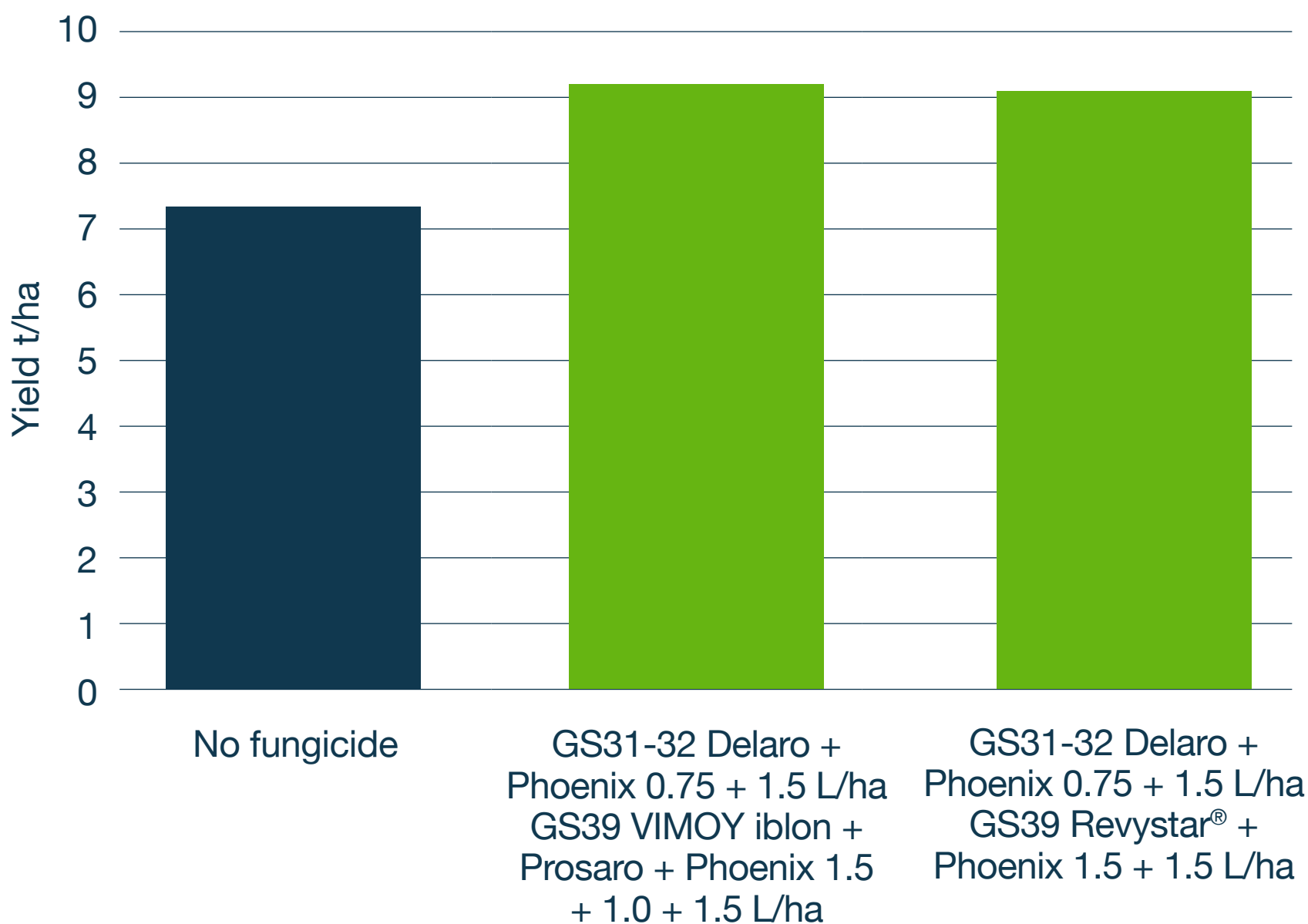


# DRIVING PROFIT FORWARD IN BARLEY

Barley is attacked each year by a number of aggressive diseases, which if not treated can lead to a very significant yield loss. VIMOY iblon + Prosaro is registered for use on barley between GS30 and GS61 for the control of all key diseases: scald, net blotch, leaf rust and ramularia leaf spot.



**FOR HIGHER YIELD AND INCREASED PROFIT**



Mean of four barley trials, NZ 2020/21. Manawatu FP21NZL062KS02; Mid-Canterbury FP21NZL062JS04; South Canterbury FP21NZL062JS03; Southland FP21NZL062SR02. Treatments apart from “no fungicide” received a GS30-32 fungicide application.

*“iblon is a fantastic fungicide  
that gives you  
so much persistence.”*

**ROSCOE TAGGART**  
NORTH CANTERBURY





# *Key diseases* *in **barley.***

1

**Scald**

2

**Leaf rust**

3

**Net blotch**

4

**Ramularia leaf spot (RLS)**

**1**

# SCALD



This is one of the first diseases to attack barley, being regularly found in late winter and early spring, as it thrives in cool, moist conditions. In spring, with the right weather conditions, scald will progress rapidly, infecting new leaves as they emerge, to eventually infect all leaves and the stem. When not effectively controlled, significant yield losses occur.

## LOOK OUT FOR:

- Pale green, 'watersoaked' lesions
- Mature lesions showing brown borders with a pale centre

## RISK FACTORS:

- Cool, moist conditions

## 2

# LEAF RUST



In recent years, this disease has become easier to find, with infections becoming more severe and starting earlier in spring. All rust diseases complete their life cycle very quickly and have multiple life cycles per season, which is why they can have such a devastating impact.

### LOOK OUT FOR:

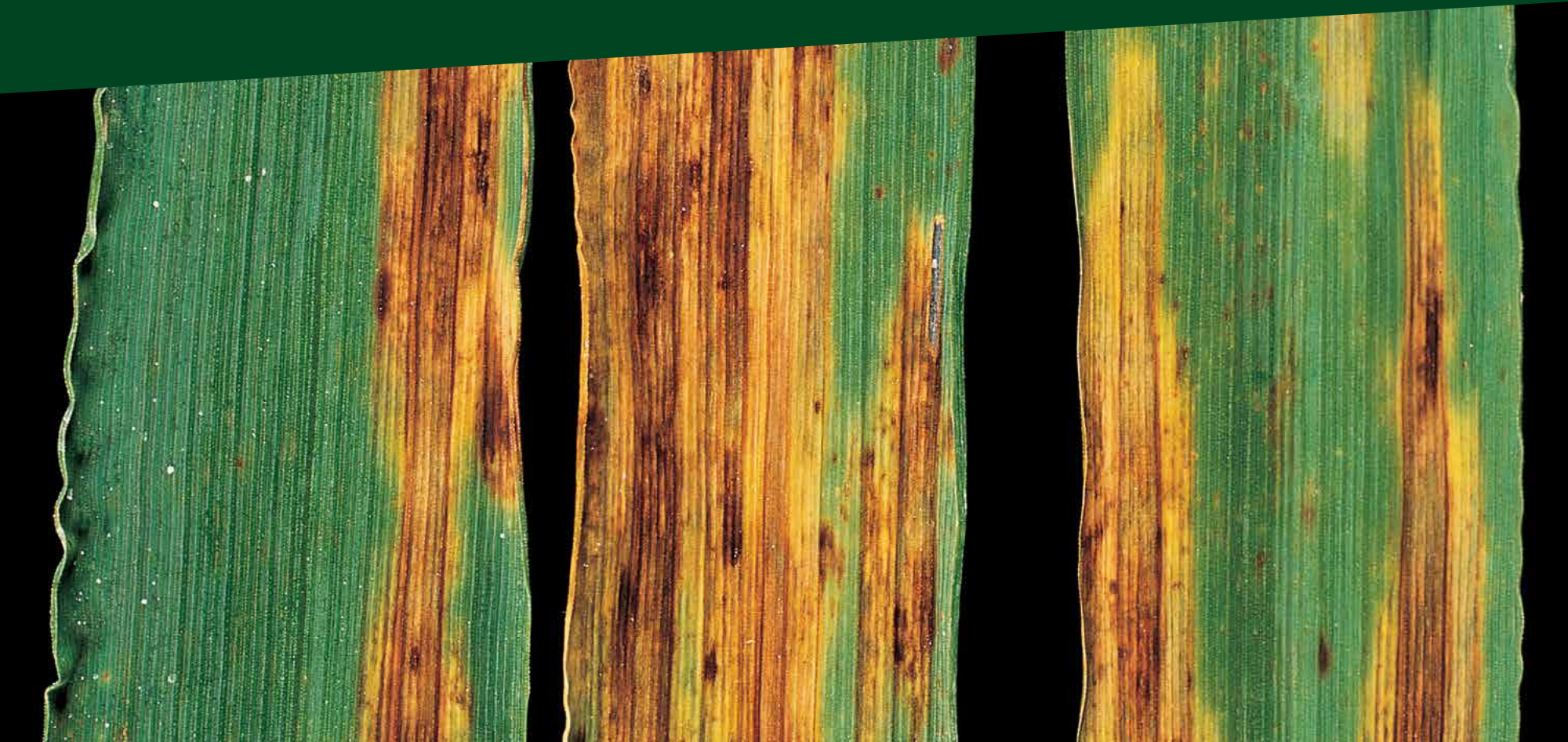
- Brown rust pustules scattered across the surface of the leaf

### RISK FACTORS:

- Warm conditions

### 3

## NET BLOTCH



In some years, it can be quite hard to find net blotch, as it requires a susceptible cultivar and usually a second-year barley crop to develop. Like scald, it is a disease favoured by cool, moist conditions, and is often seen in early spring. However, under the right conditions, it can develop very rapidly and lead to significant yield losses.

### LOOK OUT FOR:

- Net-like symptoms especially in second year barley crops

### RISK FACTORS:

- Infected stubble or seed
- Cool, moist conditions

# 4

## RAMULARIA LEAF SPOT



RLS is now an important pathogen of barley throughout New Zealand and leads to rapid leaf loss in early summer.

### LOOK OUT FOR:

- Small, brown spots
- Larger, reddish-brown lesions

### RISK FACTORS:

- Infected seeds
- Barley stubble
- Spring rainfall
- High light intensity following flowering

# THE IMPORTANCE OF FUNGICIDE STEWARDSHIP



By using VIMOY iblon + Prosaro you are protecting your crop with fungicides that have different modes of action and which are both active against the target diseases. This is a very strong approach to adopt to slow down the development of fungal resistance.



# VIMOY iblon + PROSARO + PHOENIX IN ACTION



No fungicide applied - severe scald infection.



VIMOY iblon 1.5 L/ha + Prosaro 1.0 L/ha  
+ Phoenix 1.5 L/ha applied at GS39.

Seed treatment Raxil Star. The crop also received a GS31-32 fungicide application of Delaro 0.75 L/ha + Phoenix 1.5 L/ha.

Location: Aorangi, Manawatu. Barley, c.v. Sanette. Image taken 15.10.20.

# VIMOY iblon + DELARO IN ACTION



No fungicide applied - severe RLS infection.



Delaro<sup>®</sup>/iblon fungicide programme.

Significant reduction in RLS following a Delaro/iblon fungicide programme.

Location: FAR site Chertsey mid-December 2018.



*“The yield increase was quite substantial with VIMOY iblon.”*

**ERIC WATSON**  
WAKANUI

# CONTACT US



## REGIONAL BUSINESS MANAGERS & MARKET DEVELOPMENT AGRONOMIST

Upper North Island	Phil Bertram <i>Regional Business Manager</i>	021 426 825
Gisborne and Hawke's Bay	Marc Fox <i>Customer Market Manager</i>	021 426 823
Lower North Island / Nelson / Marlborough	Susie Dalgety <i>Regional Business Manager</i>	021 426 824
North and Mid Canterbury	David Parker <i>Regional Business Manager</i>	021 760 794
Mid and South Canterbury	David Weith <i>Regional Business Manager</i>	021 426 096
Otago and Southland	Daniel Suddaby <i>Regional Business Manager</i>	021 426 822
New Zealand	Jonathon Shields <i>Market Development Agronomist</i>	021 540 298



*We're with you in the field*  
***[cropscience.bayer.co.nz](http://cropscience.bayer.co.nz)***

VIMOY iblon, CALEY iblon, Delaro, Prosaro and Raxil Star are registered pursuant to the ACVM Act 1997 Nos. P9617, P9637, P8953, P7662 and P9246 and are approved pursuant to the HSNO Act 1996, Nos. HSR101374, HSR101413, HSR100886, HSR007871 and HSR101132 respectively. VIMOY<sup>®</sup>, Caley<sup>®</sup>, iblon<sup>®</sup>, Delaro<sup>®</sup>, Prosaro<sup>®</sup> and Raxil<sup>®</sup> are registered trademarks of the Bayer Group. © Bayer Crop Science 2021.

Disclaimers: Before using the products read and carefully observe directions, cautionary statements and other information appearing on the product label. Our technical information, whether given verbally or in writing, is based on extensive testing. It is, to the best of our current knowledge, true and accurate, but given without warning in as much as the conditions of use and storage are beyond our control. Descriptions and property data of the product do not contain any statement as to the liability for possible damage. In other respects our conditions of sale apply.